



MONTHLY MEMBERSHIP PROGRESS REPORT

District 202 L

Results as of: 06/30/2019

GMT: CLIFFORD HEYWOOD

LOCATION NEW ZEALAND

GMT CA

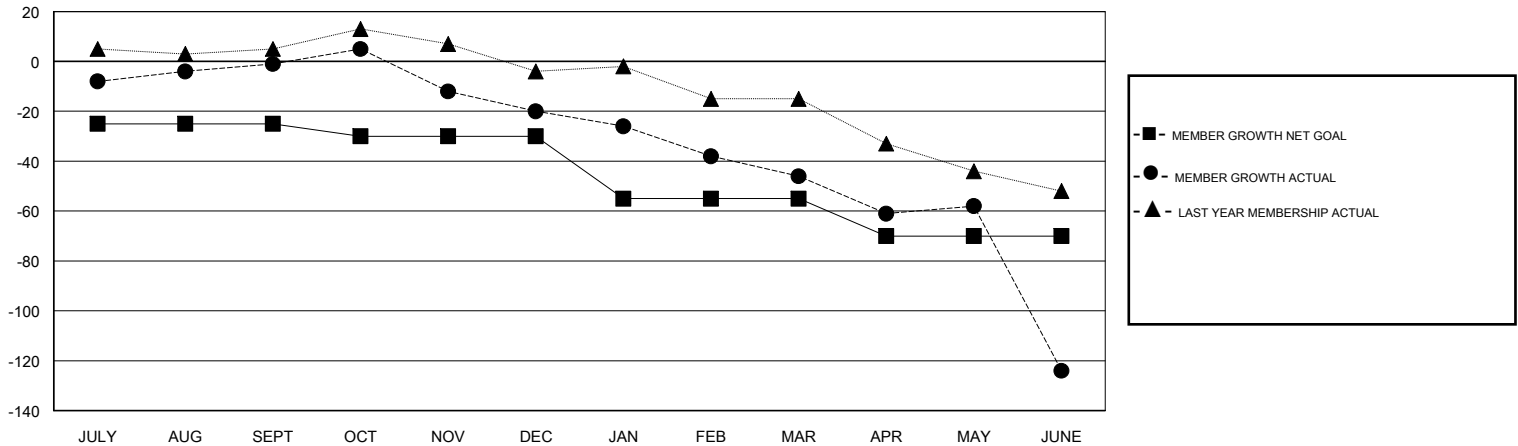
Clubs			
RESULTS FOR 2018-2019			
QUARTER	NEW CLUB GOAL	NEW CLUBS	DROPPED CLUBS
JULY/AUG/SEPT	0	0	0
OCT/NOV/DEC	1	0	0
JAN/FEB/MAR	0	0	0
APR/MAY/JUNE	1	0	2

Members			
RESULTS FOR 2018-2019			
QUARTER	MEMBER GROWTH NET GOAL	MEMBER GROWTH ACTUAL	DROPPED MEMBERS ACTUAL (including transfers)
JULY/AUG/SEPT	-25	33	28
OCT/NOV/DEC	-5	30	48
JAN/FEB/MAR	-25	10	34
APR/MAY/JUNE	-15	64	131

GOALS AND ACTUAL NEW CLUBS CUMULATIVE



GOALS AND ACTUAL MEMBERS CUMULATIVE



DROPPED CLUBS: 2	41 CLUBS OF 60 ADDED 1 OR MORE NEW MEMBERS	<u>GENDER DISTRIBUTION</u> MALE 1,105 (69.02%) FEMALE 496 (30.98%) Women Percentage Fiscal Year Goal: 40%
<u>DROPPED MEMBERS</u> DECEASED 25 CLUB CANCELLED 21 OTHER 195 TOTAL 241	CLICK HERE FOR CUMULATIVE MEMBERSHIP DATA	TOTAL FAMILY UNIT MEMBERS 152 FAMILY MEMBERS PAYING HALF DUES 76